

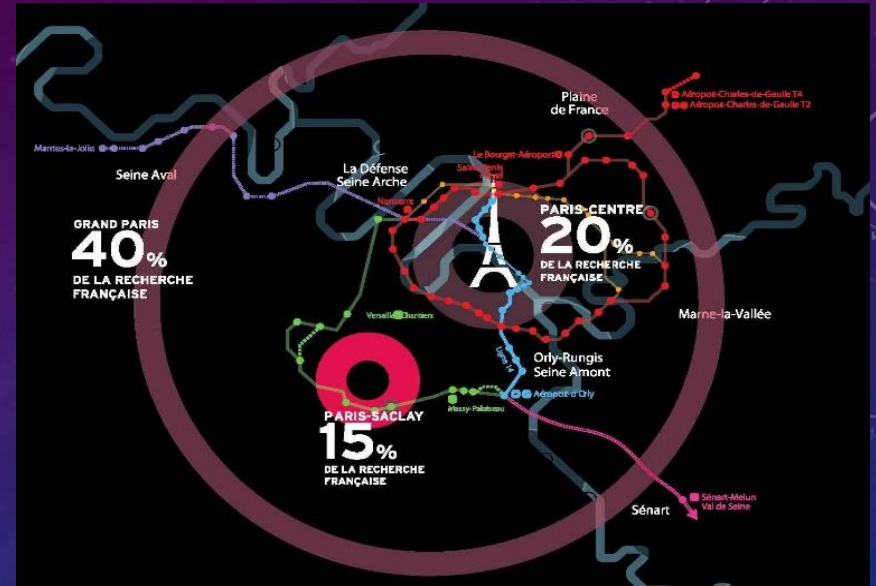
ENTER A DOUBLE DEGREE PROGRAM WITH A FRENCH PARTNER SCHOOL



WHY CHOOSE PARIS ?

The Paris region:

- 4.6% of total EU GDP – 669 B€
- 678,000 students – 75,000 intern. students
- > 1M companies
- 1st EU region for R&D and innovation
- 162,000 researchers and R&D engineers
- > 50% of French startups



Plateau de Saclay campus:

- 40% of public and private research in the Paris region
- 15% of French research
- One of the top 8 innovation clusters in the world
- 45,000 R&D jobs
- 15,000 researchers – 360 labs
- 65,000 students
- 20 km south of Paris

EXCELLENCE IN EDUCATION

- Excellence since 1741
- World's top 50 universities (QS, CWUR)
- > 95 % employability rate 4 months after graduation
- 50 000€ / year on average after graduation
- 30% international students



EXCELLENCE IN RESEARCH AND INNOVATION

- Cross disciplinary research
- Among top 8 innovation clusters in the world
- Close collaboration with companies
- High level of entrepreneurship

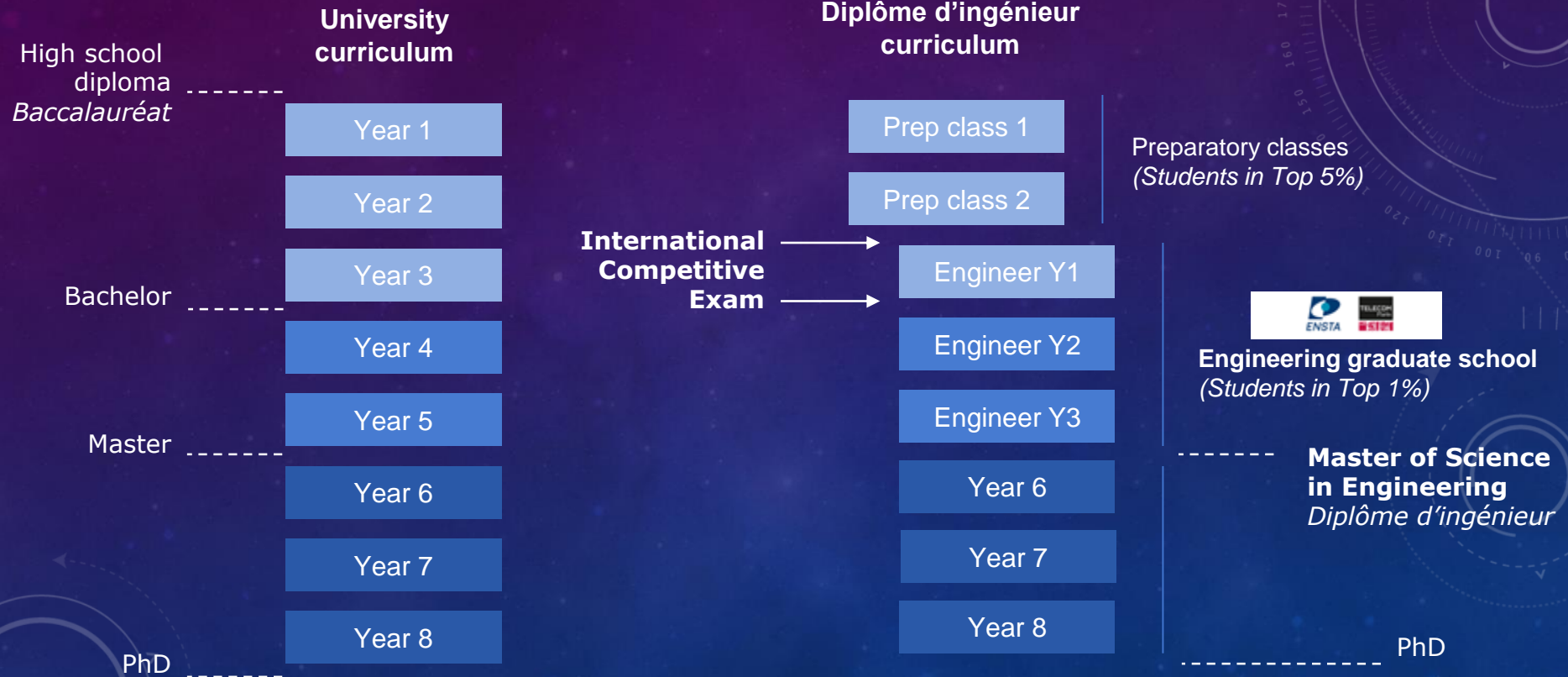


FRENCH COMPANIES IN CHINA

- China is France's 7th customer and 2nd supplier
- Over 1,100 French companies are present in China, representing 570,000 jobs
- Industrial cooperation in:
 - Civil nuclear
 - Transportation and aeronautics (A320 assembly line and completion of the A330 in Tianjin)
 - Sustainable development
 - Financial services



FRENCH HIGHER EDUCATION SYSTEM



THE FRENCH *DIPLÔME D'INGÉNIEUR* CURRICULUM

- Highly selective Master's Degree, recognized worldwide
- Multidisciplinary education:
 - Fundamental sciences: mathematics, physics, chemistry
 - Engineering sciences
 - Economics, management, entrepreneurship & innovation
- Soft skills: communications, critical thinking
- International skills: languages, geopolitics, international mobilities
- Strong interaction with companies: internships
- Personalized curriculum
- Possible combination with a PhD track



A MULTIDISCIPLINARY CURRICULUM



Chemistry, Biology and Health		
Economics and Quantitative Sociology		
Actuarial Science		
Energy	✓	
Nuclear Engineering	✓	
Computer Science and Artificial Intelligence	✓	✓
Information and Communication Engineering	✓	✓
Mathematics, statistics, Data Science	✓	✓
Engineering Mechanics	✓	
Physics	✓	✓
Transport, Mobility	✓	
Innovation, Entrepreneurship	✓	✓

WHY ENTER A DOUBLE DEGREE PROGRAM?

- Many specialization opportunities
- You get to study in two different countries, master two languages and experience two cultures
- You develop your academic and professional networks at the global scale
- It gives you an advantage over other candidates for a position / PhD program
- It is a real asset to work later in a field where international exposure is key

WHAT ARE THE REQUIREMENTS?

- 3 years successfully completed
- Academic excellence
- Willing to learn French
- Interest in French culture
- Open-mindedness and adaptation skills



	SEU Students
Year 1	SEU - 1 st year of Bachelor's degree
Year 2	SEU - 2 nd year of Bachelor's degree
Year 3	SEU - 3 rd year of Bachelor's degree <i>+ French language courses if required</i>
Year 4	ENSTA / TELECOM - 2 nd year of "diplôme d'ingénieur" curriculum
Degree conferred	Bachelor's degree (SEU)
Year 5	ENSTA / TELECOM - 3 rd year of "diplôme d'ingénieur" curriculum
Degree conferred	Diplôme d'ingénieur (ENSTA / TELECOM)

HOW TO APPLY?

- Nomination by SEU
- Online application : July to Sept 30, 2021
<https://admission.ensta.fr/en/>
- Notification of eligibility: October 8, 2021
- Interviews for pre-selected candidates: October 11 to October 29, 2021
- Selection of school preferences: October 30 to November 3, 2021
- Final acceptance from one school: November 15, 2021
- Reception of admission letters: December 2022 to March 2023
- Term starts: September 2023



OUR SCHOOLS





NATIONAL RANKINGS



- 2nd best Engineering School in terms of **academic excellence** (*Le Figaro 2021*)
- 2nd best Engineering School in **digital technology, computing and mathematics** (*Le Figaro 2021*)
- 8th best Engineering School overall (*L'étudiant 2021*) – out of ~250 Engineering schools in France



Founded in 1741
Oldest French Engineering School



EDUCATION AND RESEARCH IN:

- Transportation
- Energy
- Complex Systems Engineering
- Mathematical Engineering

- **135** faculty members
- **650** lecturers (70% from companies)
- **800** students
- **~250** graduates every year
- **30%** international students
- **30%** women
- **6000** alumni



- **430** apartments
- **30** minutes from downtown Paris
on the IP Paris Campus

YEAR 2

Majors & Minors

- **Mechanical Engineering**
 - Sustainable energy
 - Mechanical modelling
 - Smart systems
- **Applied mathematics**
 - Mathematical engineering
 - Mechanical & physical models
- **ICST**
 - Artificial intelligence & cyberphysics
 - Software & cyber security

Law, economics, management, communications & languages

➤ **Research project**

YEAR 3

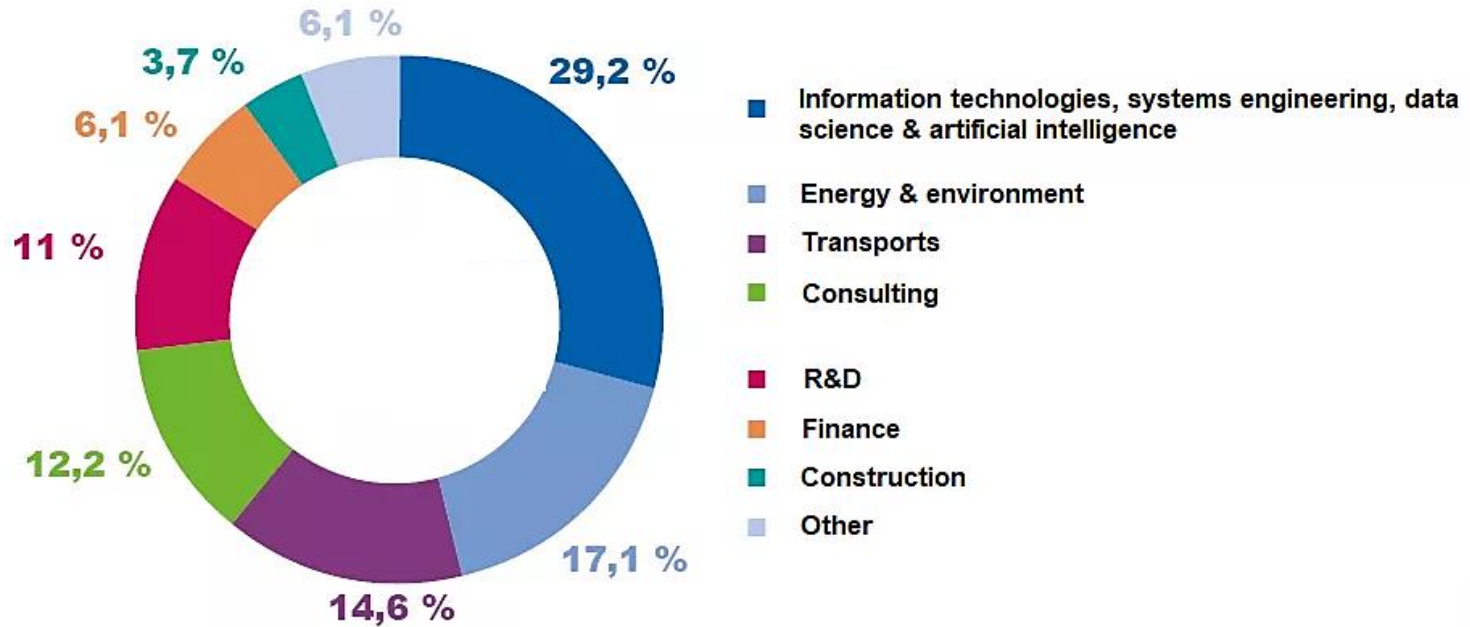
10 specialization tracks

- Smart mobility
- Offshore transport
- Energy production
- Nuclear power
- Optimization and data science
- Modelling & simulation
- Quantitative finance
- Robotics
- Artificial intelligence
- Cybersecurity

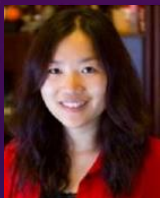
Law, economics, management, communications & languages

➤ **Final degree project**

EMPLOYMENT PROSPECTS



ALUMNI NETWORK

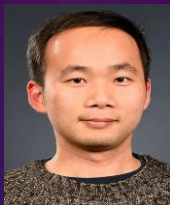


Yunqing ZHEN
(2007)



Executive
Director

UBS Investment
Bank



Yan ZHU
(2015)



ACAP Research
Fellow

University of
New South
Wales,
Australia



Hao HUANG
(2019)



PhD Candidate

EDF



XU Xiaofen
(2014)



FP&A and
Economics
Analyst

ENGIE



LIU Yanxi
(2013)



Senior
developer

QuickSign



INSTITUT
POLYTECHNIQUE
DE PARIS



The Leading French Engineering School in Digital Technologies

❖ International rankings

- 2nd ranked French engineering school – T.H.E. 2020
- 6th World's Best Small Universities – T.H.E. 2020
- 188th in T.H.E. world university ranking – 2020

- QS world university ranking by subject - 2021
 - 64th in QS Computer Sc. & Information Systems ranking
 - 218th in QS Electrical & Electronic Engineering ranking
 - 301-350 group in QS Mathematics ranking
- 2nd (France) & 112th (world) for graduate employment rate – QS 2020



❖ French rankings

- 1st School in Digital Technology (Le Figaro 2020)
- 2nd French engineering School (L'Etudiant 2021)
- 1st in internationalization (L'Etudiant 2021)
- 1st in proximity with companies (L'Etudiant 2021)



3 Major Profiles of Engineers

INVENTORS

Thanks to Excellence in Scientific Teaching:



Bruno MAISONNIER (83)
Creator of NAO and PEPPER



Vincent DUREAU (84)
TV technology for Google



Luc JULIA (95)
SIRI technology for Apple

ENTREPRENEURS

Thanks to an Innovative, Interactive and Project-based Pedagogy:



Céline LAZORTHES (08)
Leetchi Founder



Oscar SALAZAR (06)
UBER co-founder



Jean-Luc VAILLANT (90)
LinkedIn co-founder

TRANSFORMERS

Thanks to Economics & Digital Social Sciences Teaching:



Elodie PERTHUISOT-ZIEGLER (01)
Executive Director E-commerce & marketing,
Carrefour



Jean-Christophe LALANNE (83)
CIO, Air France-KLM

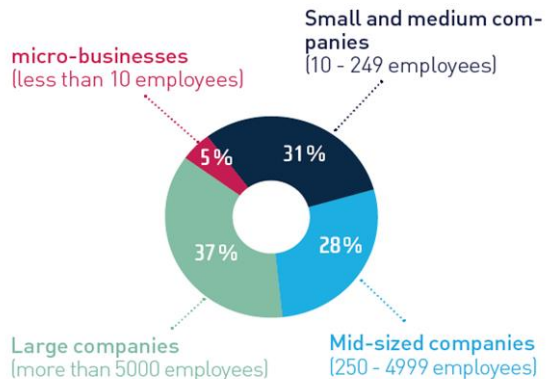


Yves TYRODE (91)
Digital Officer, BPCE

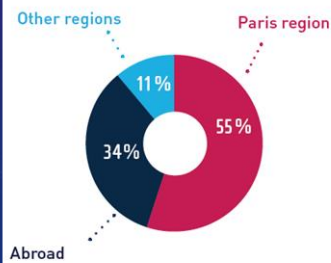
Excellent Employment Prospects

97% of graduates are employed within 3 months of graduation.

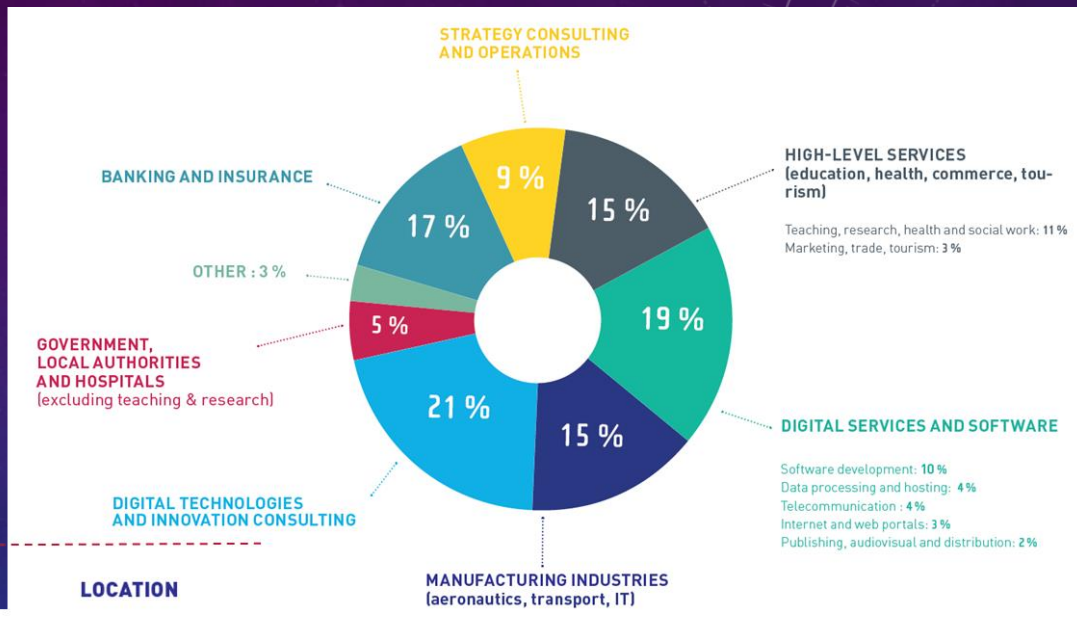
COMPANY SIZE



LOCATION



Source: 2020 1st Job Survey of the last 3 graduating classes



47,950 €
Average annual gross salary with bonuses

A global alumni network



ZHANG Antoine
(1992)



Vice President HR,
AREVA Asia
Beijing, China



CHEN Lin
(1985)



Director,
ZTE
Paris, France



SHAN Xiaoyang
(2011)



Professor,
Wuhan University
Wuhan, China



SHI Fei
(2011)



Executive Director
Goldman Sachs
New York City, USA



YI Lilin
(2008)



Professor & Vice-Head,
SJTU
Shanghai, China

Year 2 : 2 Study Fields among 14

AI & Data Sciences



Data Science (SD)



Signal Processing for
Artificial Intelligence
(TSIA)



Image (IMA)

Mathematics & Computer Sciences



Stochastic processes and
scientific computing (MACS)

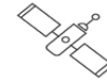


Applied algebra, Cryptography,
Quantum information, Coding
theory (ACCQ)



Mathematics, Theoretical
Computer Science & Operation
Research (MITRO)

Computer Systems, Interactive and Embedded



Embedded Systems (SE)



Distributed Software
Systems (SLR)



3D & Interactive systems
(IGR)

Networks, Communications & Cybersecurity



Large Digital
Infrastructure (GIN)



Wireless networks
and IoT (RIO)



Infrastructures and
Networks Security
(SR2I)



Telecommunications:
data to systems
(TELECOM)

Economics & Digital Innovation



Markets,
Organization, Data,
Strategies (MODS)



Year 3: Career Preparation Options

Télécom Paris
Technological innovation – 30 ECTS (1 semester)

1 study field - 12 ECTS
+ a “PRIM” Research & Innovation Projet - 12 ECTS
+ complementary elective courses (sciences, languages, humanities, etc.)

Areas:

- Artificial Intelligence, Image and Data Sciences
- Fundamentals of Mathematics & Computer Science
- Networks, IOT and Cybersecurity
- Digital systems
- Innovation

OR

Partnership Master 2 - 30 ECTS



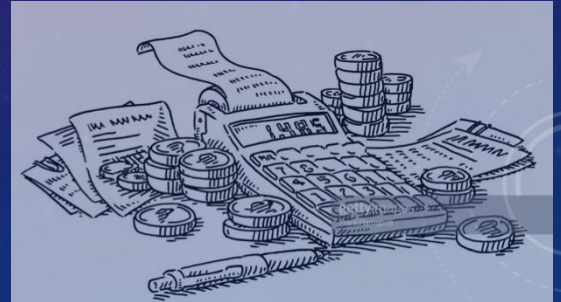
6-month paid internship in France
30 ECTS (1 semester)

TUITION FEES

Tuition fees per year		
Non-EU students	4 650 €	4 150 €
EU students	2 650 €	2 650 €
Dual Degree students	Y1: 930 € Y2: 1395 €	Y1: 0 Y2: 2 650 €

LIVING COSTS

- Average living costs in Paris: ~ €800 / month
 - **Accommodation:** from €250 to €650 / month
=> *Accommodation allowance from the French government (€100 to €200)*
 - **Public transportation card:** €38 / month (annual student pass)
 - **Complementary Healthcare:** from €10 /month
 - **A meal at the school cafeteria:** from €1 to €3
 - **Telecommunications:** from €2 / month



One of the cheapest countries for students

SCHOLARSHIPS

■ French Government Grant

❖ Eiffel Scholarship

- 1,180€ a month (24 months) + flights + healthcare + tuition fees waived + cultural activities + network

=> Only the best candidates can benefit from it - Application carried out by the International Office of Télécom Paris after admission

❖ France Excellence scholarship

- Embassy or Consulate scholarships: Please contact the French Embassy in Beijing

■ Scholarships provided by your home country or through bilateral agreements

- Higher Education & Research Ministry scholarship, etc.

■ Grants from Foundations

■ Grants from Schools



A LIVELY CAMPUS LIFE



Student Union:

- ✓ *Integration activities, Ski Weekend, etc.*
- ✓ *Coordinates all clubs and association activities*
- ✓ *Buddy program by senior students*



Culture & Music:

- ✓ *Theater,*
- ✓ *Photos, videos*
- ✓ *Music,*
- ✓ *Dancing,*
- ✓ *Intercultural,*
- ✓ *Gaming,*
- ✓ *etc*



Sports:

- ✓ *Organized by student associations*
- ✓ *several disciplines: sailing, badminton, handball, tennis, volleyball, gym, rugby, etc.*
- ✓ *Access to numerous sport facilities on the campus*



QUESTIONS AND ANSWERS

